

Houston Security Solutions

UNV 5MP LightHunter Active Deterrence NDAA-Compliant PTZ Dome IP Security Camera with Deep Learning AI



Uniview's Active Deterrence PTZ with LightHunter illumination technology is perfect for those areas where you really need a security camera to be noticed, both visibly and audibly. Packed into the compact body of Uniview's outdoor mini PTZ, this camera won't take up much space at the installation site. It's not nearly as obtrusive as a standard PTZ, which means you'll draw attention to this camera only when you need to.



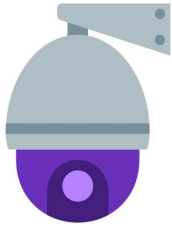
PTZ IP SECURITY CAMERA	5MP HD Resolution	2.8-12mm Motorized Varifocal Lens	IP66 Weatherproof Rating	Up to 165ft Night Vision IR Range
---------------------------------------	-----------------------------	--	---------------------------------------	--

If you have areas that are prone to vandalism or highly sensitive, places where you really want possible intruders or loiterers to be notified they are on camera, then you need to consider this camera.

Think of copper theft on air conditioners, people parking where they shouldn't be, people walking through restricted areas. This camera has a ton of practical applications.

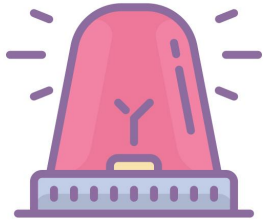
Plus, Unview's LightHunter technology gives this camera better performance in lower-light scenarios. You'll also get crisp and clear video at night with the powerful and smart infrared LEDs with an IR range of 164 feet.

With the built-in mic and speaker for two-way audio, red and blue strobe light, integrated siren, and smart human body detection, this active deterrence PTZ just might be the ideal addition to your surveillance system.



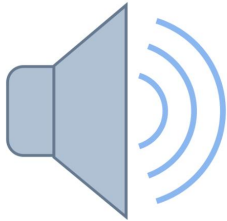
PTZ FEATURES

This camera features a 345° pan and a 90° tilt, allowing for an ultra-wide surveillance coverage. Set up to 256 pan and tilt presets, which you can call at the push of a button. Automatically switch between these presets with up to 16 routes.



STROBE LIGHT WARNINGS

You can choose to have the camera flash a very bright strobe light triggered by various events. The blue and red strobe light will instantly warn any intruders that they are in an area where they shouldn't be.



VERBAL WARNINGS

Much like the strobe light warning, you can also choose to have the camera give an audible warning to the possible intruder once an event is triggered. You can use this in conjunction with the strobe light if you wish.



5MP HD RESOLUTION

The IPC675LFW-AX4DUPKC-VG captures video up to a resolution of 5MP @ 30 FPS, which is 2880x1620 pixels. Every pixel added to your camera's picture gives you a higher image quality and more detail. So at 5MP, you're going to get a crisper, cleaner, and more detailed image.



2.8-12MM MOTORIZED VARIFOCAL LENS

The IPC675LFW-AX4DUPKC-VG has a Motorized Varifocal Lens, ranging from 30.6°~104.1°. This means you can easily and quickly adjust the zoom to your liking directly from the camera's interface.

The Motorized Varifocal Lens gives you more control over your image. Optically zoom in to view finer details and a tighter shot. Or keep the camera zoomed out to enjoy the bigger picture with a wider angle field of view.



2-WAY AUDIO

The IPC675LFW-AX4DUPKC-VG has a built-in microphone and speaker enabling you to easily communicate with family members, pets, coworkers, or even intruders. The crisp, clear 2-way audio makes this camera perfect for access points to your home or business, baby or pet monitors, and so much more!



NDA COMPLIANT

This model is compliant with the NDAA (National Defense Authorization Act), meaning it's safe to use and install on U.S. government properties. It was constructed with trusted and reliable technology at its core.



IP66 WEATHERPROOF RATING

This camera has an Ingress Protection (IP) rating of 66. This means the camera is completely protected from dust and other solid particles (the first six). It can also withstand powerful streams of water jets from any direction (the second six). Rest assured that when you install your camera outside, it will have no problem braving the toughest of storms.



UP TO 165FT NIGHT VISION IR RANGE

When the sun goes down or the lights go out, this camera switches on its own onboard infrared LED lights. These lights, which are invisible to the human eye, allow the camera to continue functioning and recording video 24/7, day or night. And since its IR range covers up to 165ft, you're not going to miss anything that happens on your camera's feeds, even if it happens in pitch-black darkness.



REMOTE ACCESS

The IUNV PTZ is a part of our Uniview line of products. As such, it's packed with features that would please a power user, yet it's simple enough to operate for a novice. Easily view and manage your cameras and recorders anywhere in the world with the free mobile and desktop applications. For the power user, these apps give you the power to adjust advanced settings on the fly. For the novice, you can use the apps to simply view live feeds and play back recorded video. Whatever you need to accomplish, it's all right there at your fingertips.



PLUG & PLAY

If you're creating a new system out of our Uniview cameras, set up is insanely easy with our Uniview line of POE NVRs. Simply plug the camera into the back of the Uniview NVR and you have instant video on the recorder's HDMI interface. You can also view and manage the NVR through free desktop and mobile apps, such as EZView and EZStation.



ONVIF COMPATIBILITY

If you want to add this camera to a security system already set up, that's no problem. This camera complies with the protocols set by the Open Network Video Interface Forum (ONVIF). This means, as long as your current recorder is ONVIF compatible, you'll be able to set this camera up with your current system.